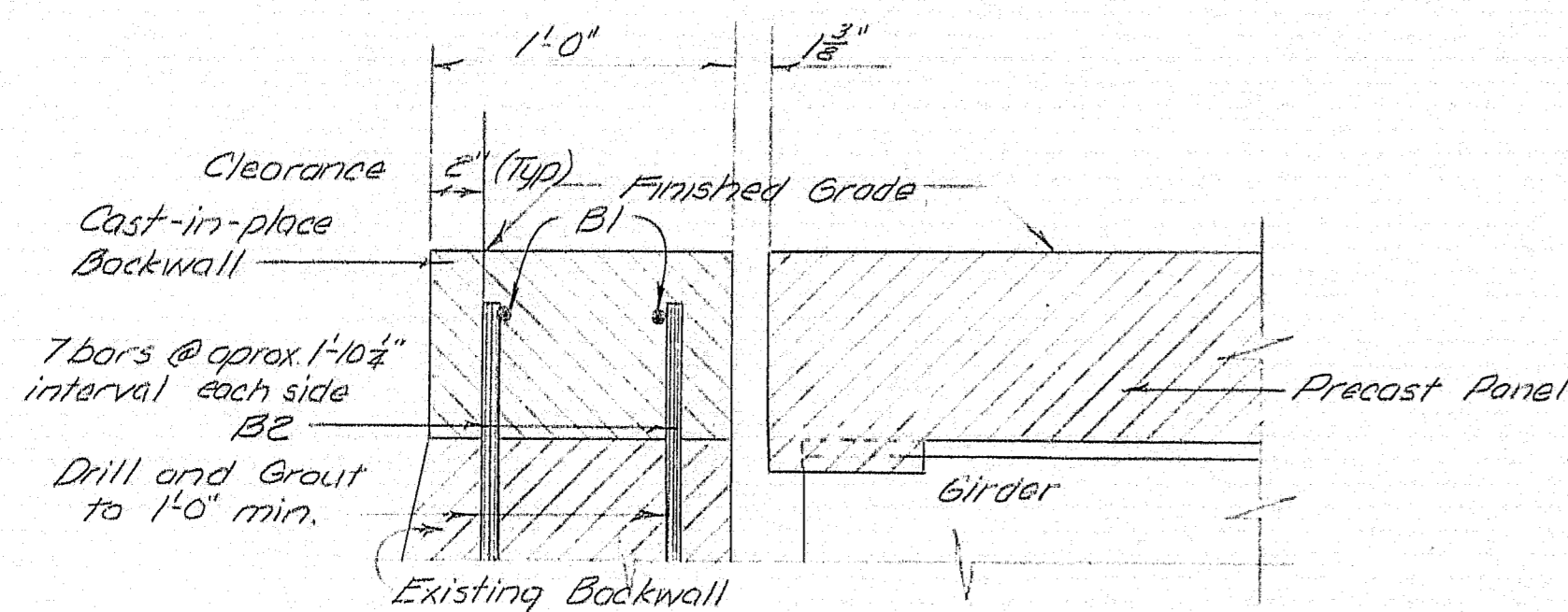
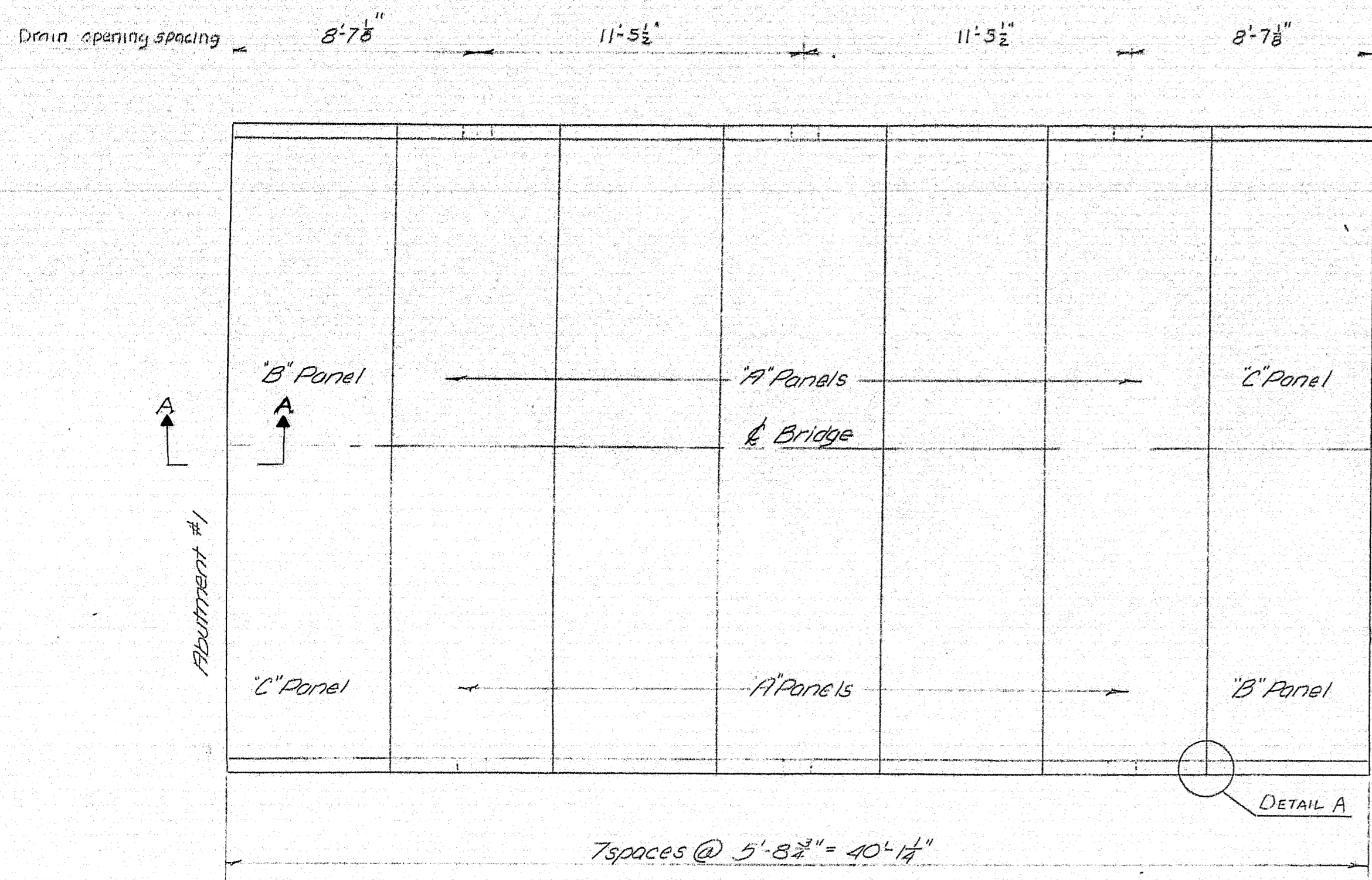
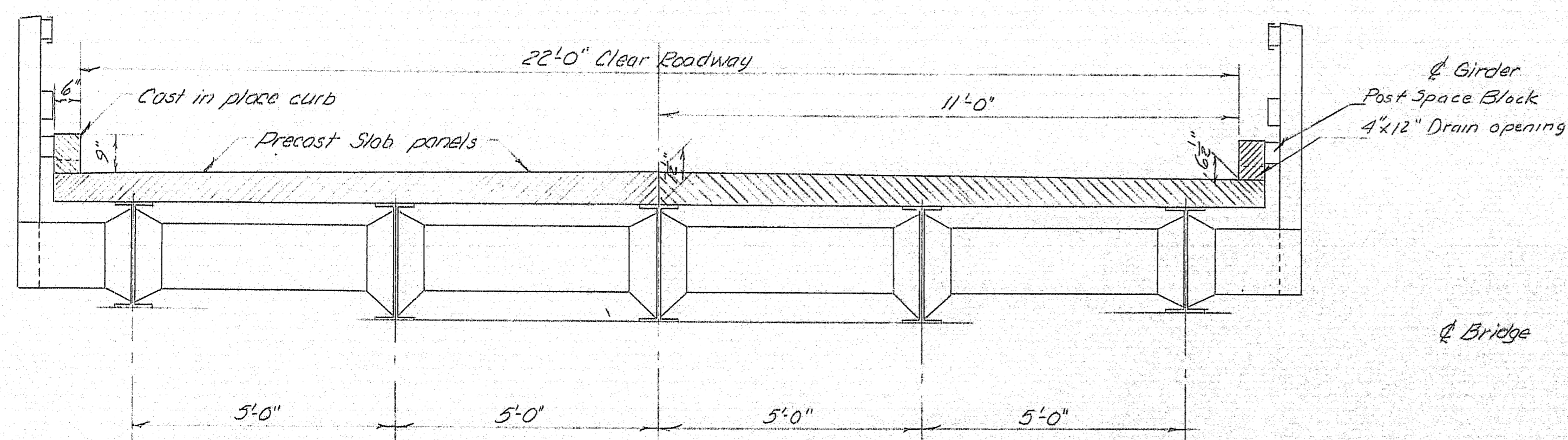


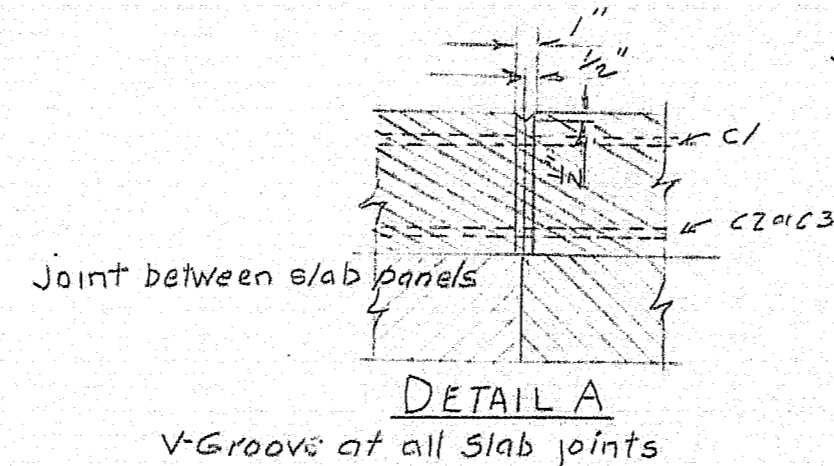
B. P. R. REG. NO.	STATE	PROJECT NUMBER	SHEET NO.	TOTAL SHEETS
1	MAINE			



SECTION AT BACKWALL -
Section A-A

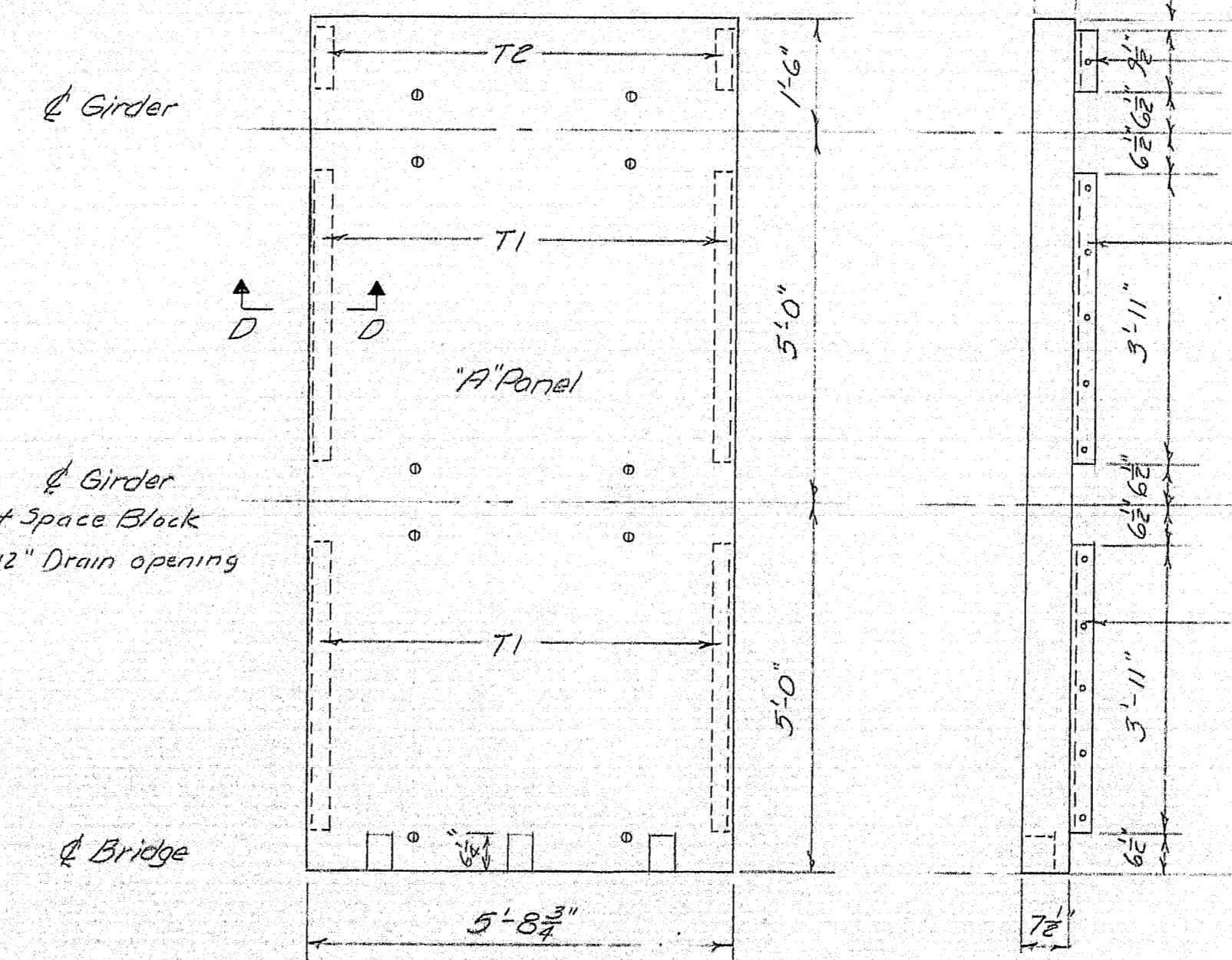


TRANSVERSE SECTION

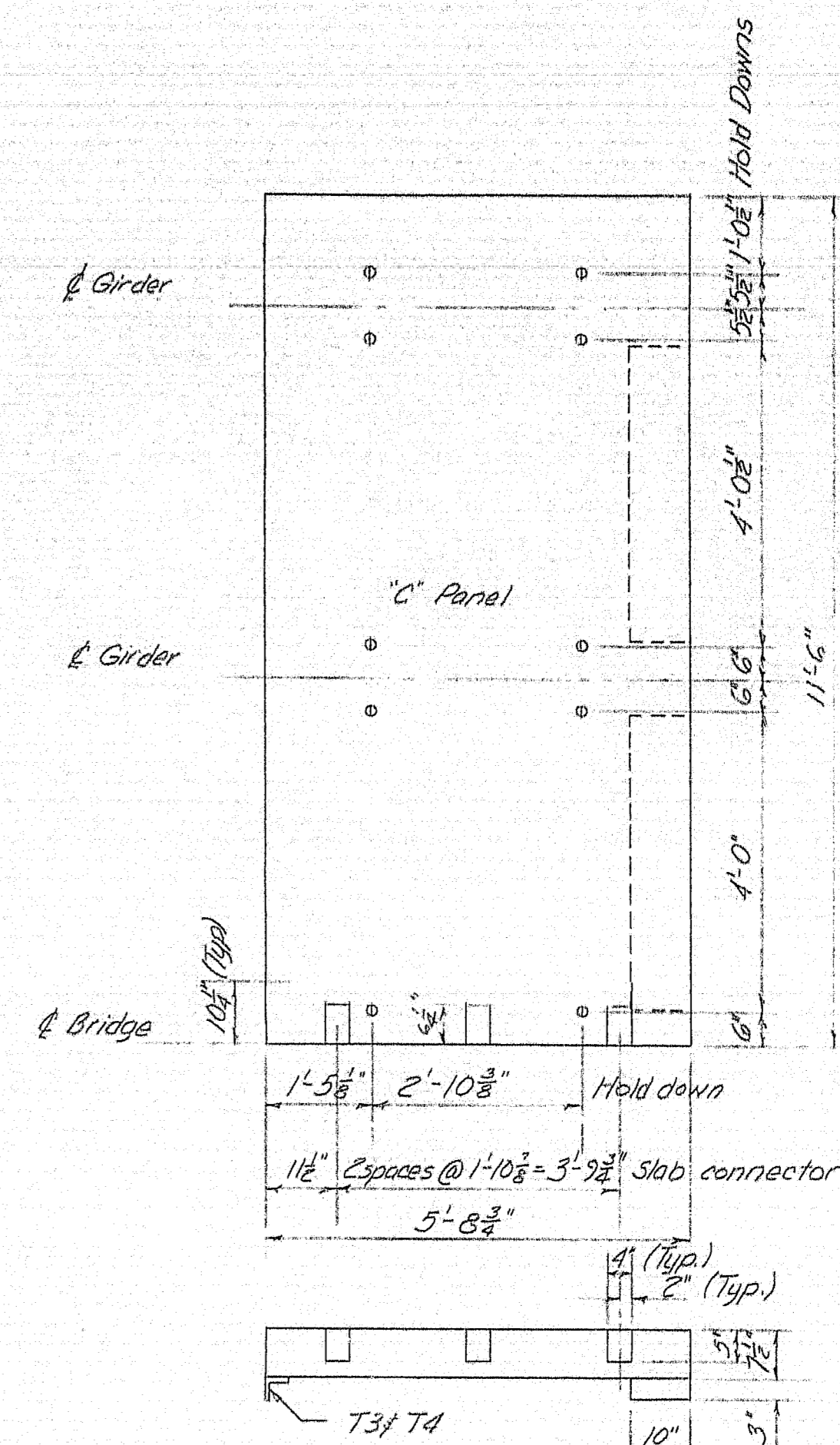


DETAIL A

REINFORCING STEEL
Location same all panels
E1 Bars located in B and C panels only



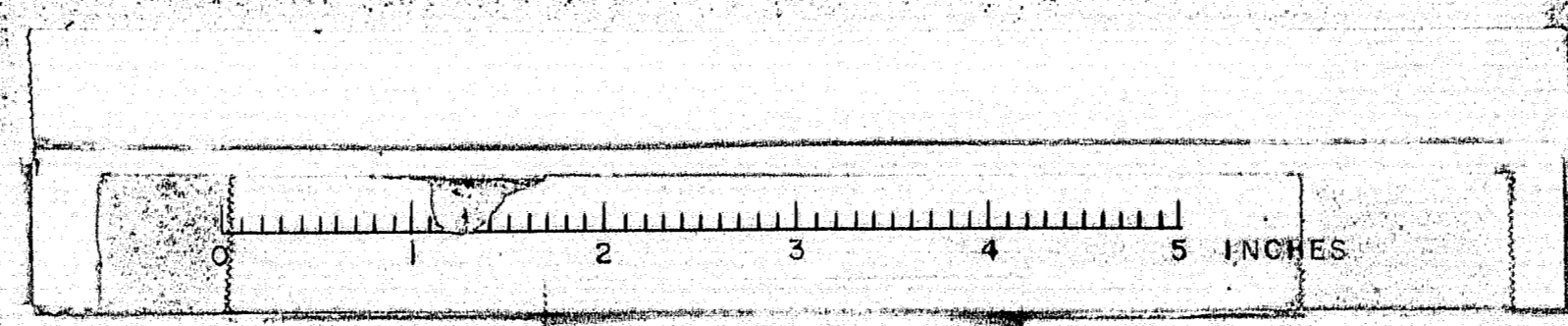
T3 and T4 LOCATIONS
At all transverse slab joints

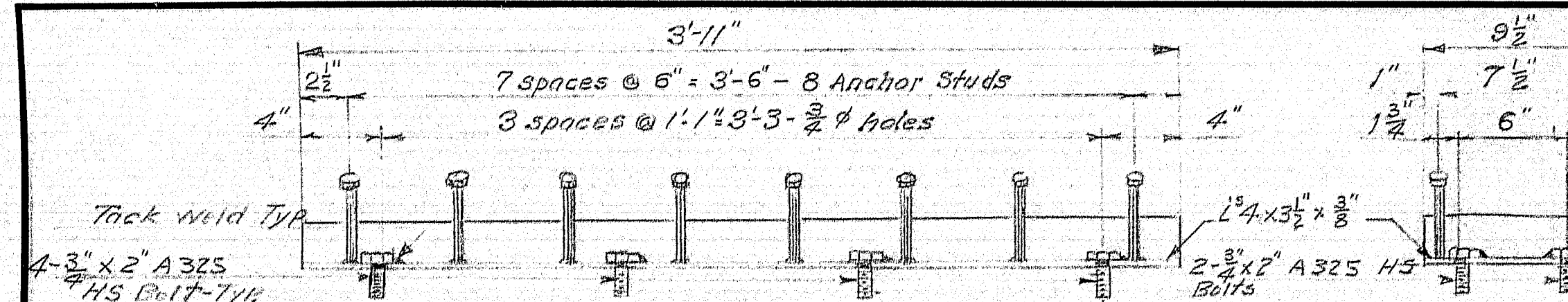


ANCHOR LOCATIONS
Same all panels

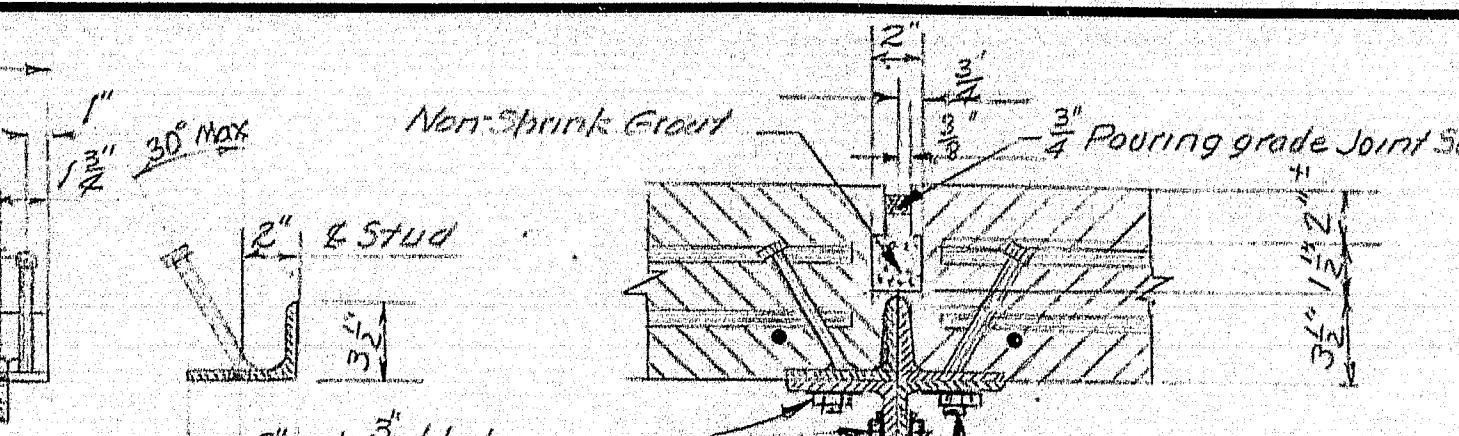
DESIGN - E. BARNARD TRACE - TWR CHECK -	BRIDGE NO. 3696 SURVEY - PLOT -
STATE HIGHWAY COMMISSION BRIDGE DIVISION	
OCEANVILLE BRIDGE OVER OCEANVILLE THOROUGHFARE IN THE TOWN OF STONINGTON HANCOCK COUNTY SUPERSTRUCTURE	
SHEET 1 OF 2 AUGUSTA, MAINE JAN 1968	

104-91

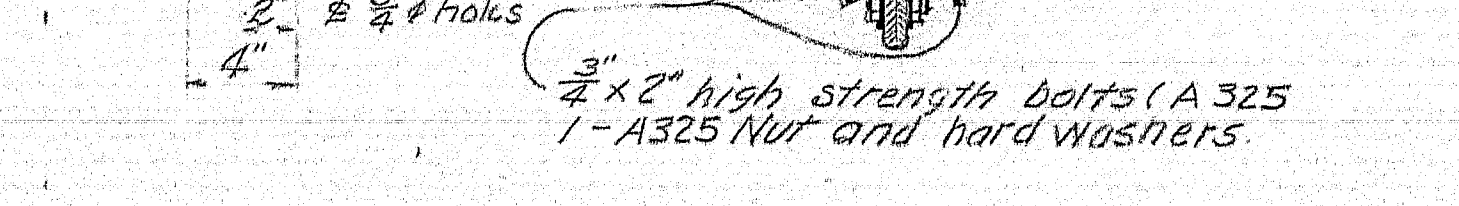




T1
48 Required

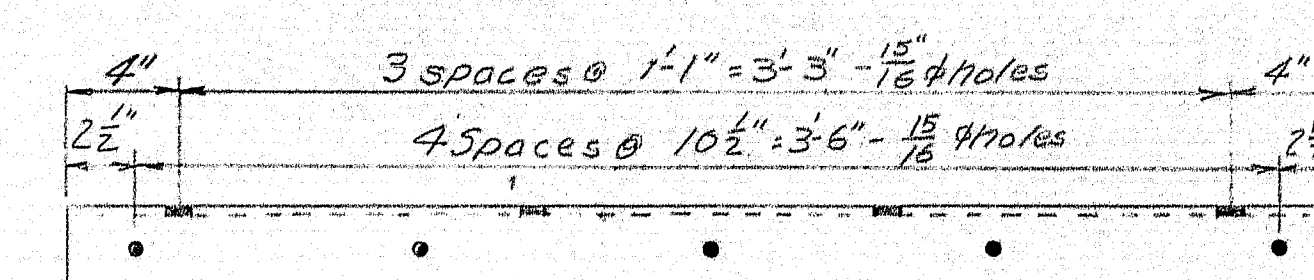


T2
24 Required

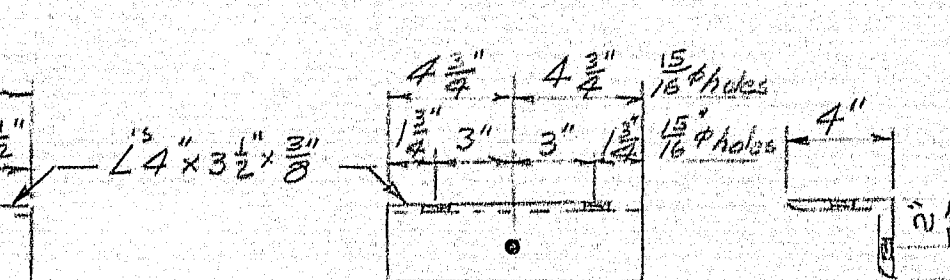


TRANSVERSE SLAB JOINT

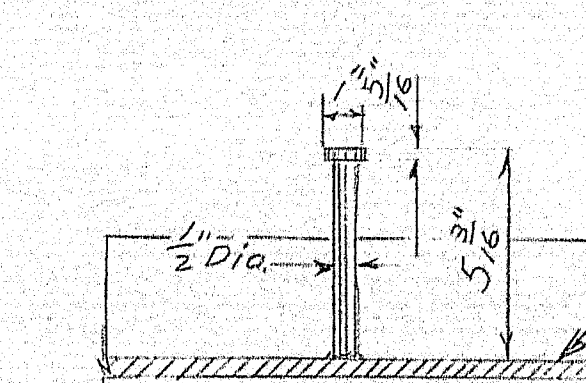
END SLAB THICKING



T3
48 Required

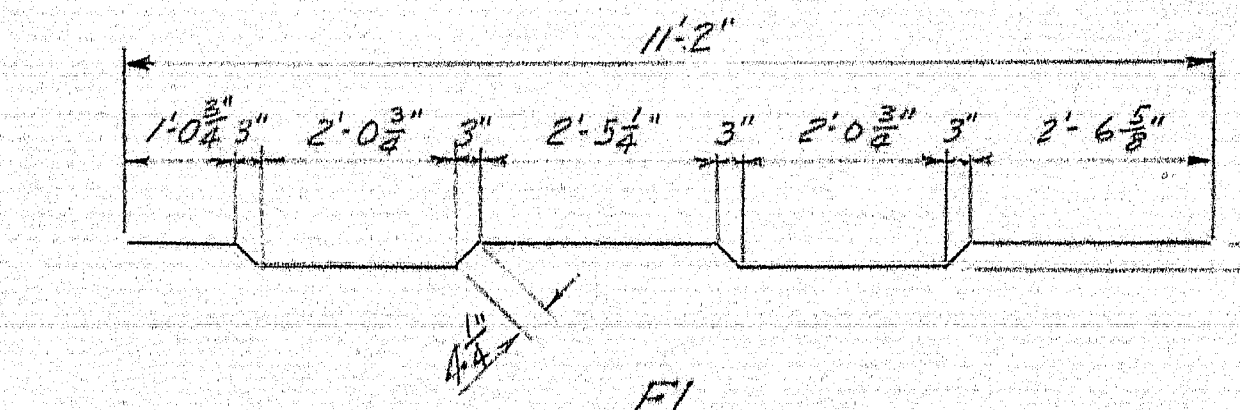


T4
24 Required

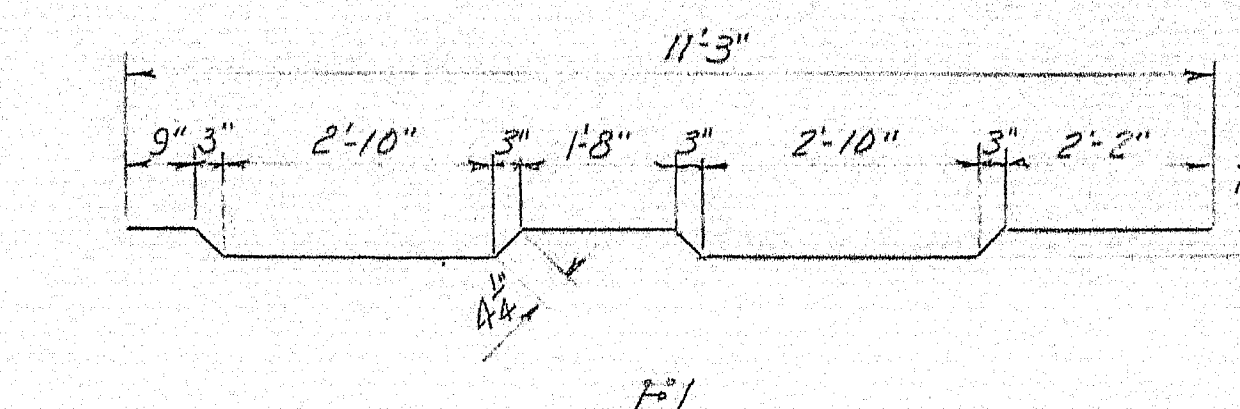


STUD DETAIL
432 Required

Straight or bent anchor studs may be used. If straight studs are used they may be welded upright and then bent to the desired angle shown.



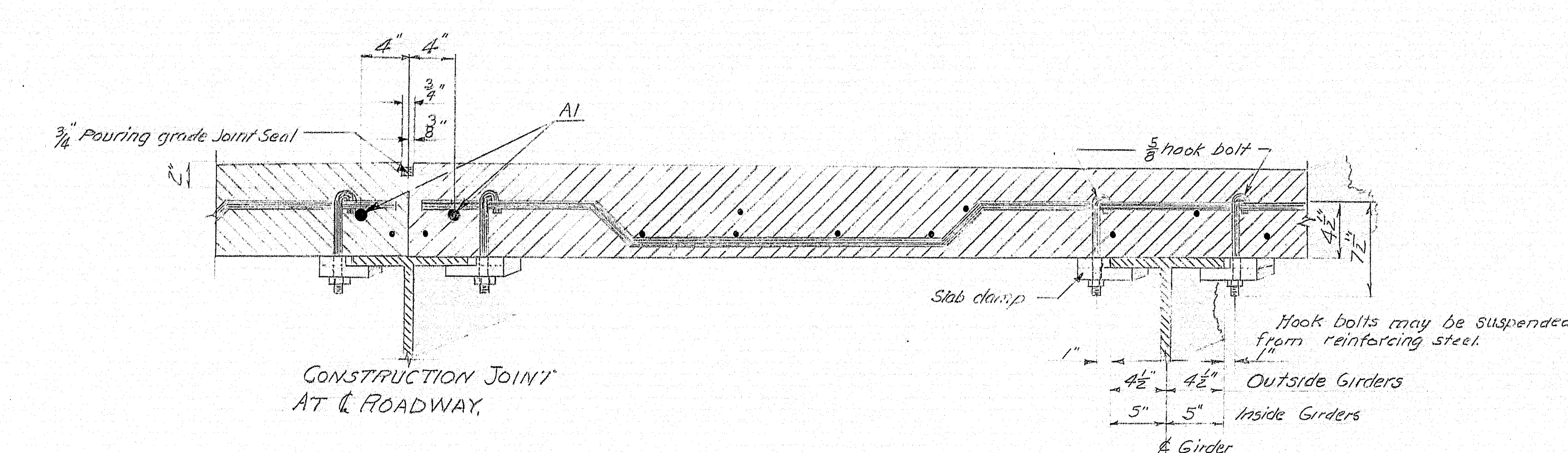
F1



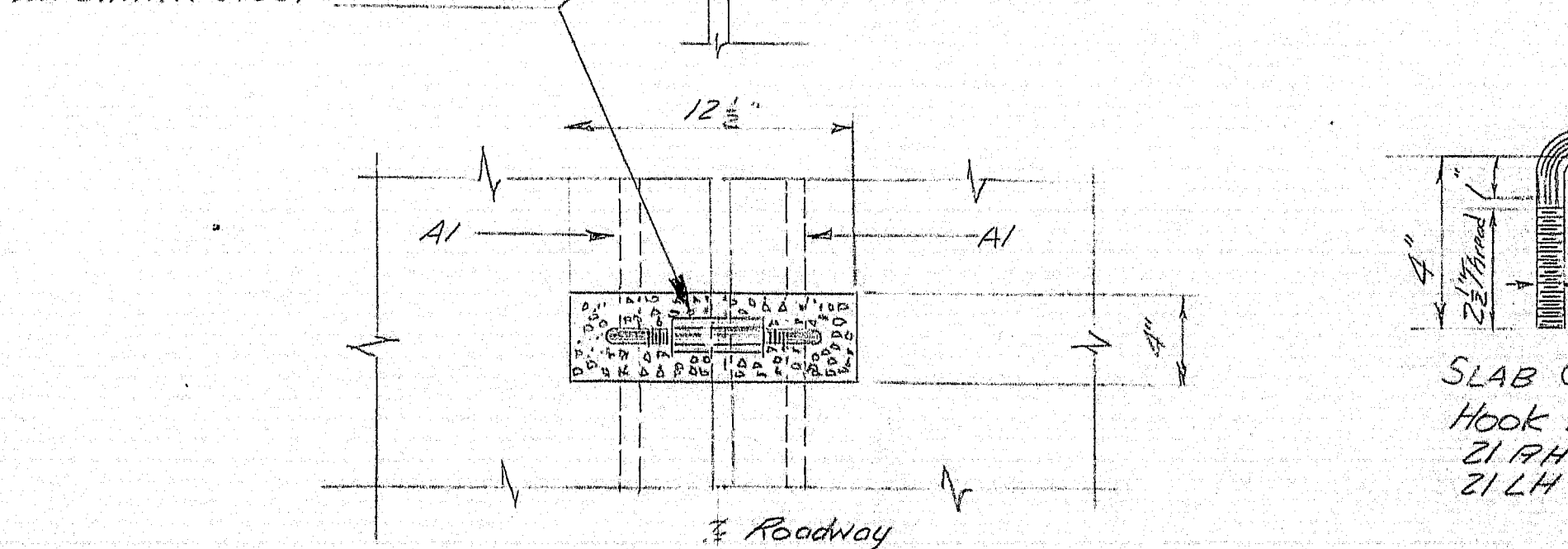
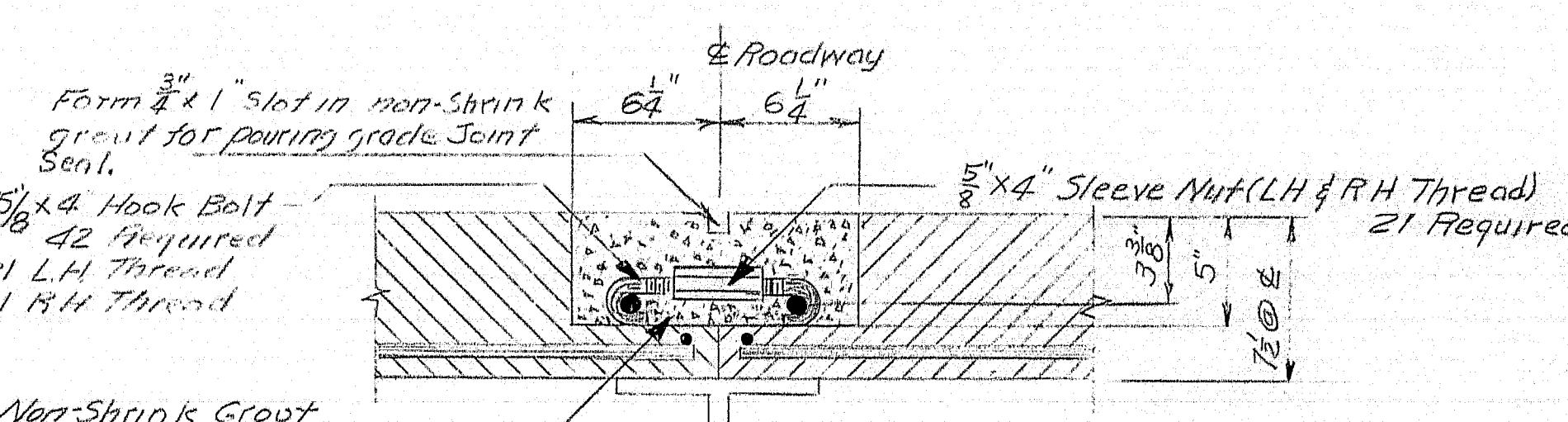
F2

STRAIGHT BARS				
MARK	SIZE	NUMBER	LENGTH	LOCATION
A1	#6	14	5'-4 1/2"	All panels, longitudinal
C1	#6	8	21'-3"	Curbs
E3	#5	84	11'-3"	All panels Transverse
F4	#4	294	5'-4 1/4"	longitudinal
B2	#5	28	1'-5 1/2"	Abutment Backwall
B1	#5	4	11'-2"	"
C2	#6	4	7'-9"	Curbs
C3	#6	4	10'-1 1/2"	Curbs
BENT BARS				
F1	#5	70	11'-8"	All panels transverse
F2	#5	84	12'-2 1/2"	"
E1	#5	12	11'-8"	B&C panels "

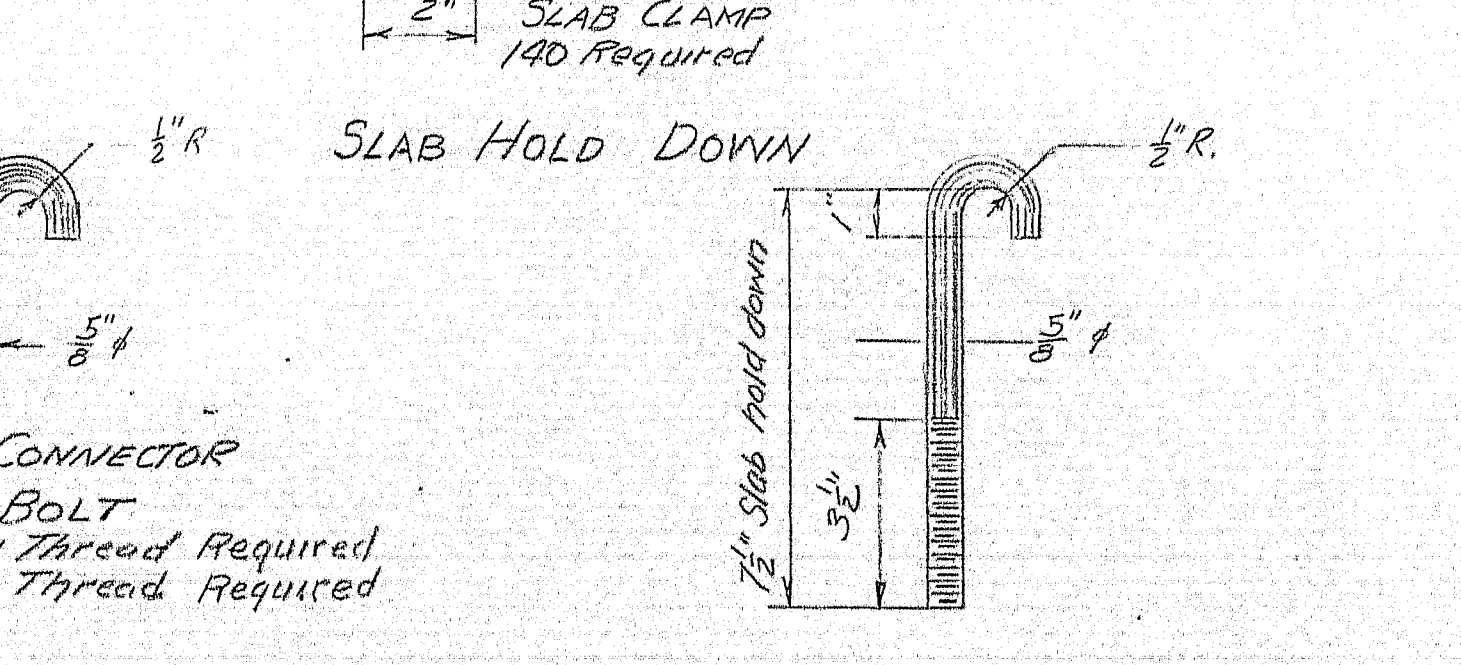
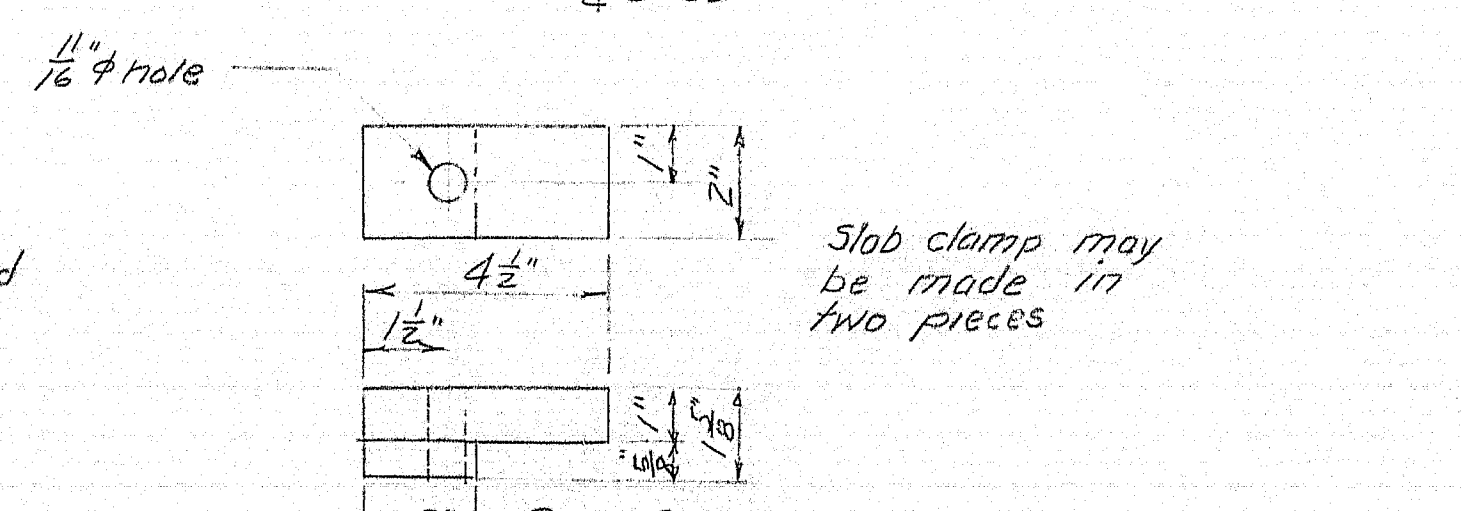
Dimensions to C of bar
Reinforcing steel to be intermediate grade.



CONSTRUCTION JOINT AT ROADWAY



SLAB CONNECTOR AT ROADWAY



SLAB HOLD DOWN

HOLD DOWN HOOK BOLT
140 Required

DESIGN - E. BARNARD, DETAIL - G. A. TRACE - G. A. CHECK -

BRIDGE NO. 3696
SURVEY -
PLOT -

STATE HIGHWAY COMMISSION
BRIDGE DIVISION

OCEANVILLE BRIDGE
OVER
OCEANVILLE THOROUGHFARE
IN THE TOWN OF
STONINGTON
HANCOCK COUNTY
SUPERSTRUCTURE

SHEET 2 OF 2 AUGUSTA, MAINE JAN 1968